

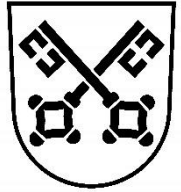


# Ideen für eine gute Mobilität entlang der L188 im Montafon

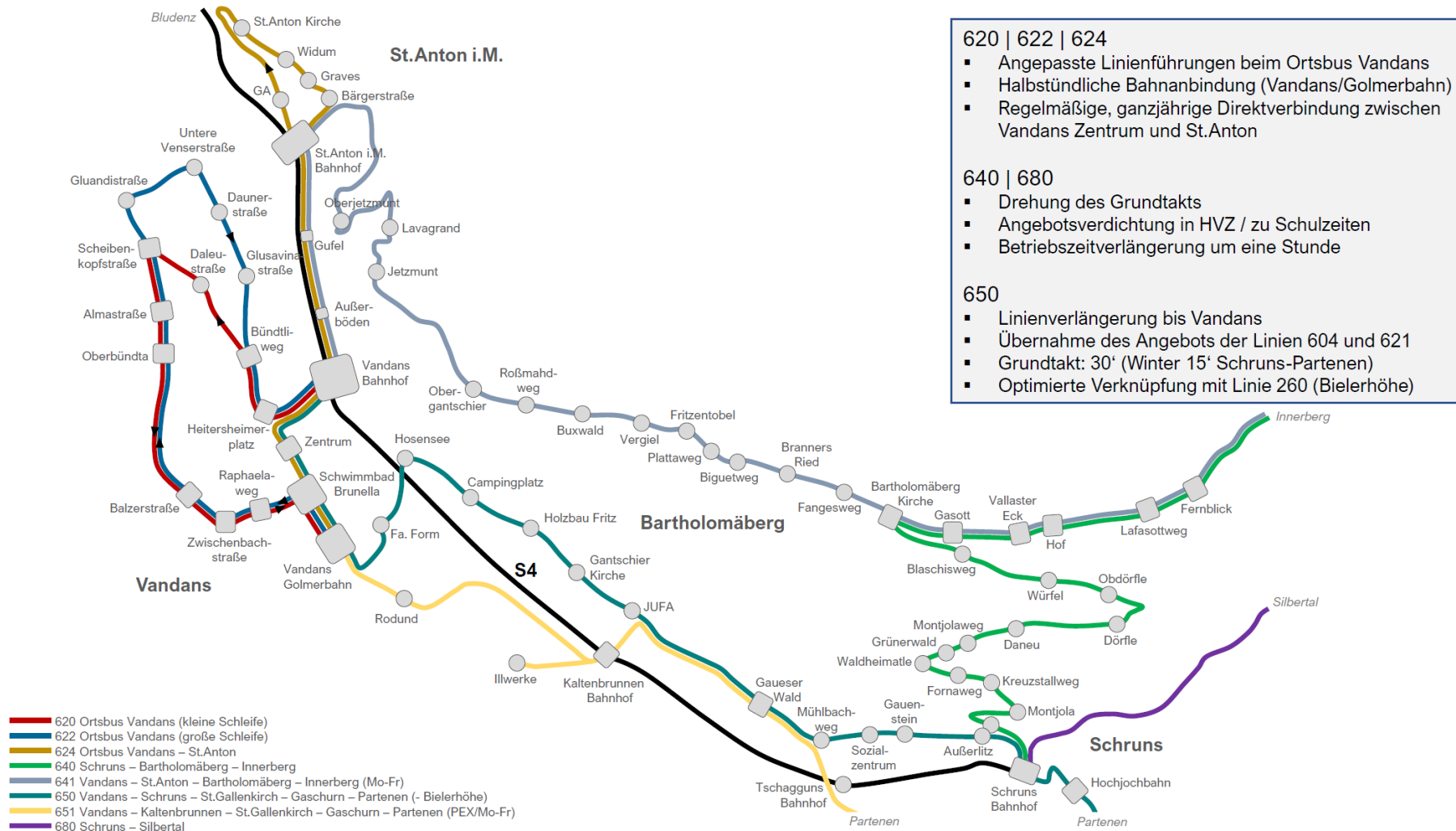
**Gemeindeverband Stand Montafon**

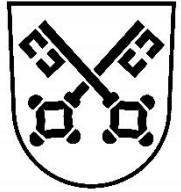
Montafonerstraße 21 | A-6780 Schruns | +43 5556 721 32

[info@stand-montafon.at](mailto:info@stand-montafon.at) | [www.stand-montafon.at](http://www.stand-montafon.at) | UID: ATU 53186305

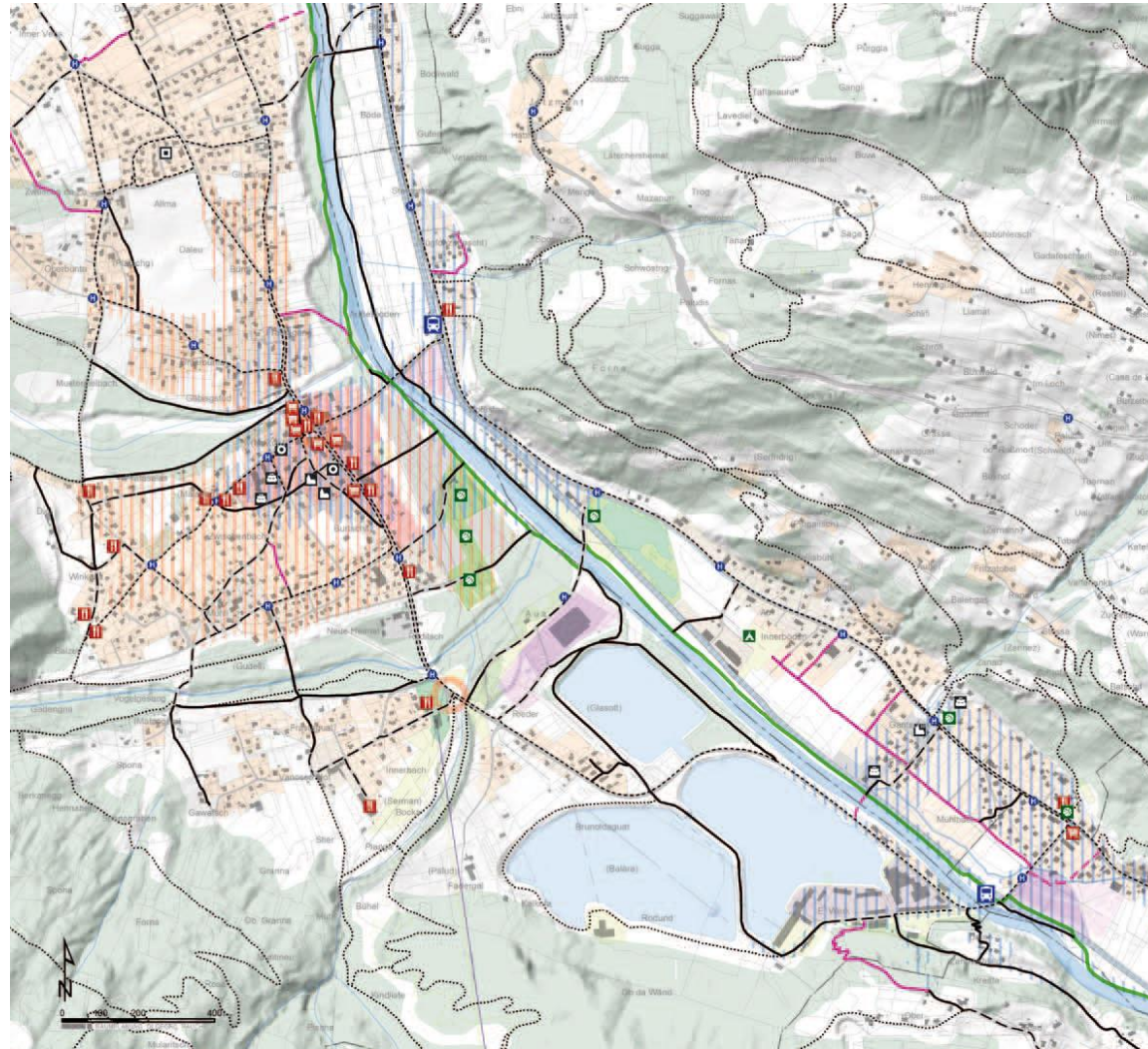


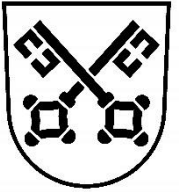
# Fahrplankonzept Landbus Montafon





# Projekt innerörtliche Fußwege





---

**vo  
stallehr  
bis  
partena**

---

Stand Montafon

